

Piet Mondriaan







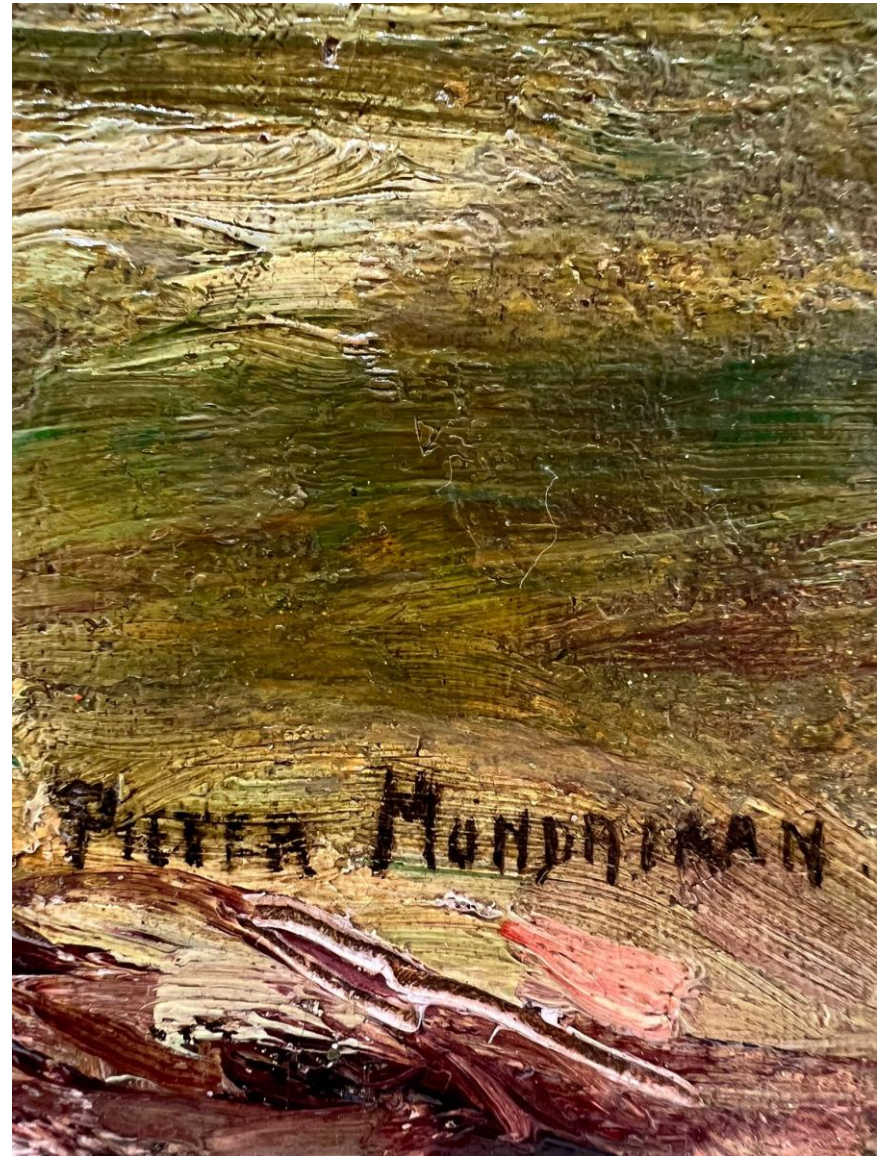
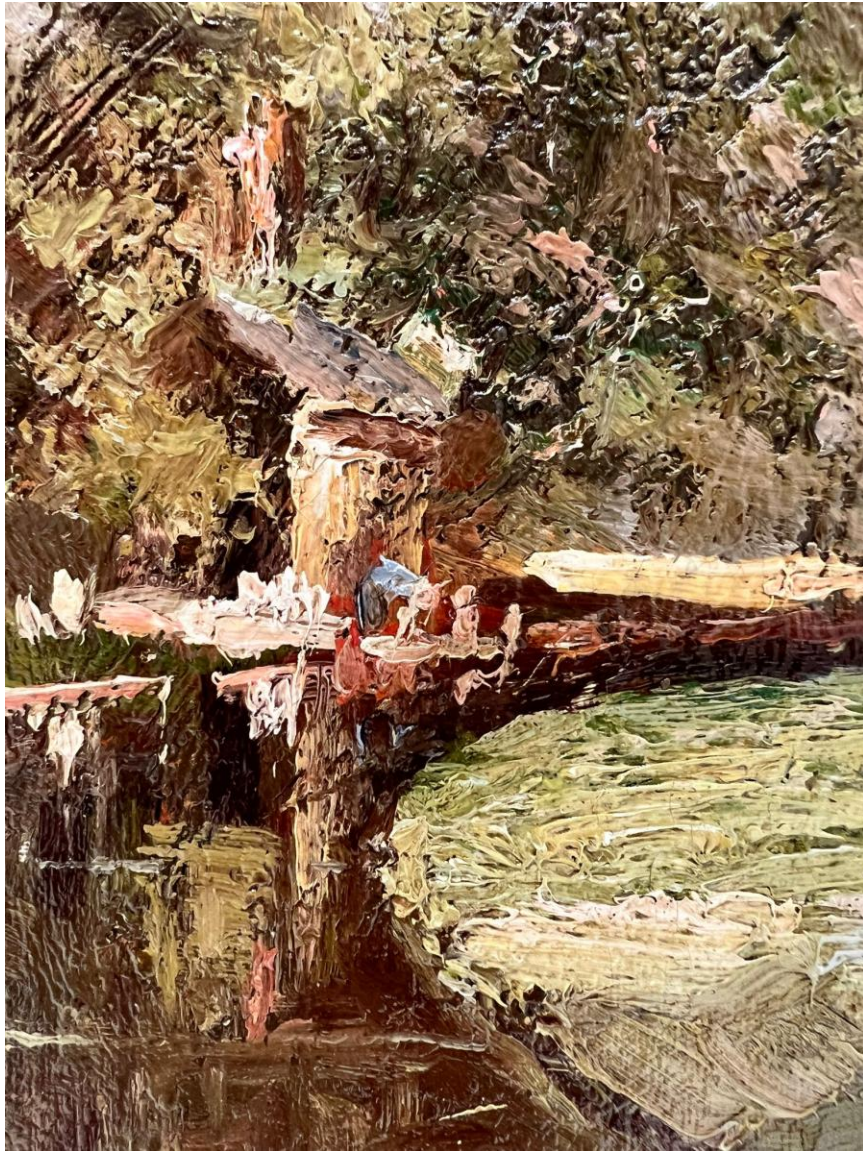
Dit is een kwaliteits
aanbesteding voor het afzetten van
Gehring / Heijdenrijk.
U wordt verzocht de foto
wettelijk of in andere wetten
te gebruiken.
Verder wordt verzocht het
handelen, handelen van de
plaat.
Uw grote samenwerking van
aanpak en het resultaat
het resultaat van het
de resultaten van het
in de vorm van het
Het projectnummer van dit is
1025
Uw grote samenwerking van
aanpak en het resultaat
het resultaat van het
de resultaten van het
in de vorm van het
Het projectnummer van dit is

72

193

1025

Gehring / Heijdenrijk





Stream Bordered by Wooded Landscape

c. 1894-96

Oil on canvas, mounted on board, 28.5 x 37 cm

Signed lower right: Pieter Mondriaan

Piet Mondrian: Catalogue Raisonné (Blaricum 1998).

Price on request

Literature 7.01 Welsh. Mondrian, 1966: 34; repr. p.35 (landscape with Stream, 1894).

Piet Mondrian

Catalogue Raisonné of the Naturalistic Works (until early 1911)

Robert P. Welsh.

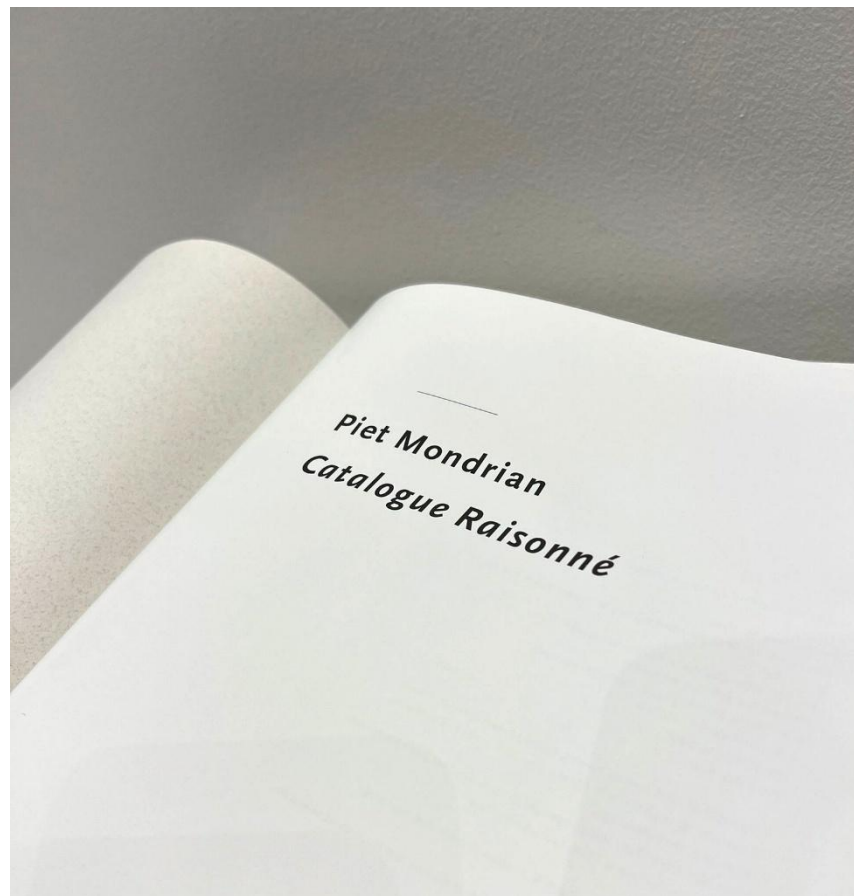
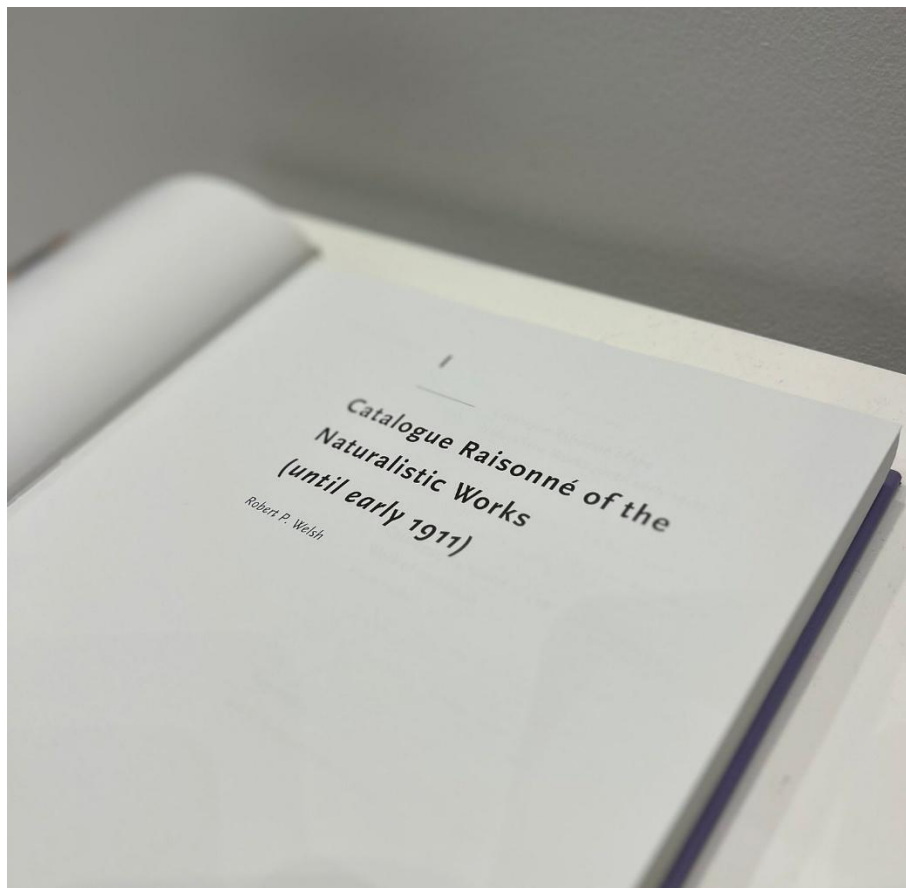
Author/Creator: Joosten, Joop M., 1926-

New York : H.N. Abrams, 1998.

Physical Desc. : 3 v. in 2 : ill. (some col.), maps, ports. ; 33 cm.

Language: English





A21 *Stream Bordered by Wooded Landscape*,
c.1894-96

Ottolenghi II: Paesaggio con corso d'acqua, 1894

Oil on canvas, mounted on board, 28.5 × 37 cm
(11¹/₄ × 14⁵/₈")

Signed lower right: Pieter Mondriaan.



EXHIBITION ⁵⁰¹ Mondriaan. Toronto / 's-Gravenhage, 1966: 8/9.
Landscape with Stream, 1894.

LITERATURE ⁷⁰¹ Welsh. *Mondriaan*, 1966: 34; repr. p.35 (Landscape
with Stream, 1894).

PROVENANCE 1954, March 16: Auction Mak van Waay, Amsterdam
(115): 314 (Landschap aan vaart); 1955, January 18: Auction Mak van Waay,
Amsterdam (119): 270 (Landschap aan een vaart) – according to following owner
to have gone to J.C. Solleveld, Rijswijk; 1961, June 13: Auction Mak van Waay,
Amsterdam (141): 348 (Landschap aan een vaart); 1961-77: Mr. and Mrs.
D.A. Hoogendijk, Amsterdam;

1977: *Private collection, Utrecht.*

COMMENT Although at first glance this diminutive painting gives the impression of a park setting, the visibility above the tree line at left of what must be the posts and caps of hayricks indicates a rural setting, hence excluding the city of Amsterdam from consideration. While such settings exist in many places within the Netherlands, there is some reason to favor a location near Winterswijk. First, the Whermerbeek stream which traversed Winterswijk was accompanied in its extentions into the surrounding countryside by a variety of picturesque settings. A photograph of c.1900 of one of these – the site of a former knightly castle (*havezate*) named the Plekenpol (fig.a) – displays, in this case because it survived from the moat or canal having surrounded the courtly residence, the same type of manicured stream bank found in the depiction by Mondriaan. Such settings near Winterswijk were typically accompanied by nearby cafés or other centers of recreation where the townspeople could come to relax. Second, the rare use of the spelling “Pieter” in the signature is found only with a handful of other representations, all of which, on the basis of style or some other consideration, are likely to have been executed during the early to mid-1890s; at least one, *WARMTE* (*Warmth: Farm in the Achterhoek*; cat.no.A20), has an identifiable Winterswijk area setting. Third, the use of this signature might well derive from the artist’s wish not to be confused with his uncle Frits, the appearance of whose name is rather easily confused with “Piet.” This would have been especially appropriate for those few examples of landscape art by Piet which evince, as in the case of this painting some affinity with the style of his uncle – evidenced, for example, in the little panel *Landscape with Cows and Canal* (Winterswijk introduction, fig.e), a painting formerly ascribed to the hand of Piet due to tampering with the signature.



Fig.a The canal surviving from the former moat surrounding the knight's castle (*havezate*), Plekenpol, at Winterswijk, c.1900. Photo: coll. W. Peletier, Winterswijk.

Exhibition

5.01 Mondrian. Toronto / 's-Gravenhage, 1966: 8/9. Landscape with Stream, 1894.

Provenance

1954, March 16: Auction Mak van Waay, Amsterdam (115): 314 (Landschap aan vaart); 1955, January 18: Auction Mak van Waay, Amsterdam (119): 270 (Landschap aan een vaart) - according to following owner to have gone to J.C. Solleveld, Rijswijk; 1961, June 13: Auction Mak van Waay, Amsterdam (141): 348 (Landschap aan een vaart); 1961-77: Mr and Mrs D.A. Hoogendijk, Amsterdam; 1977: Private collection, Utrecht.

Art
Gallery
VOÛTE
SINCE 1994



Edwin Voûte

Tel / Whatsapp +31651922582